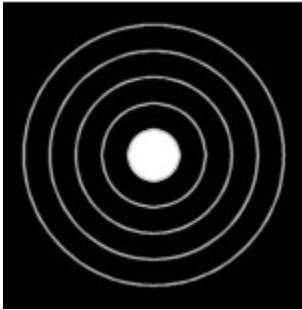


Double Worcester Round

17th October 2021

Hosted by Droitwich Archery Society.



A Double Worcester is a 16 inch face on a black background, using 5 zone scoring (i.e. inner “gold” is 5 points, outer ring is 1 point).

The indoor shooting distance is 20yds, shooting 5 arrows per end with a total of 60 arrows being shot in total. The maximum score achievable is 300.

During a Worcester Round, one target is placed above another, with archers swapping targets every 2.5 dozen arrows.

Archers can shoot one Worcester round, although the vast majority shoot the much more demanding ‘Double Worcester’, this being two Worcester rounds, one shot in the morning and one in the afternoon.

It's nice to have an official round named after the nearest city to the club, especially as it has its own special target face and scoring. This event is a record status round so we're likely, we hope to see some top archers and watch their performance.

If you would prefer to watch the event and assist the field party run the event, please contact me, letting me know your times of availability. Duties include collecting/delivering kit from 6GE, baking cakes or other sweet treats to sell on the day, helping with refreshments and selling raffle tickets.

Archery GB Rules for shooting Worcester Round:

<https://www.archerygb.org/rule-changes/>

Many thanks for your continued support.

Sarah Czyrko

DAS Governance

secretary@droitwicharchery.co.uk